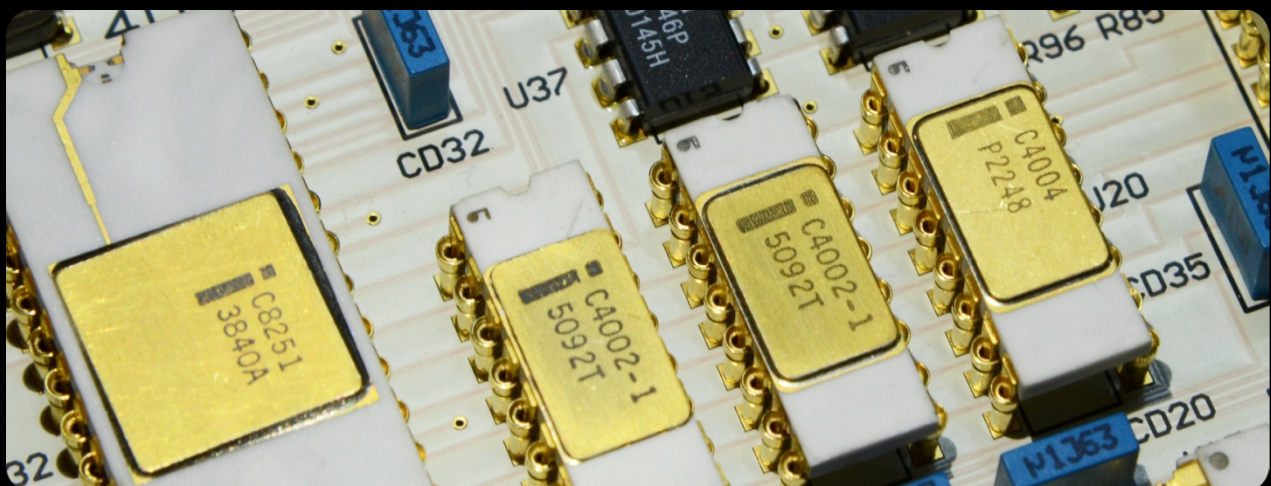


FREDERIC IMBERT

THE 4004 REBORN – WHITE CERAMIC 4004 INVENTION PIECE 02

For its 47th anniversary, a tribute to the very first and most iconic microprocessor of the history, the legendary Intel™ 4004, in its perfect white ceramic package, to drive a unique time masterpiece.

This creation combines in a single artwork, past and present technologies, vintage and collectible museum grade components, to reveal a surprising piece of horology Art



FREDERIC IMBERT

THE 4004 REBORN – WHITE CERAMIC 4004 INVENTION PIECE 02

THE ARTISTIC CREATION

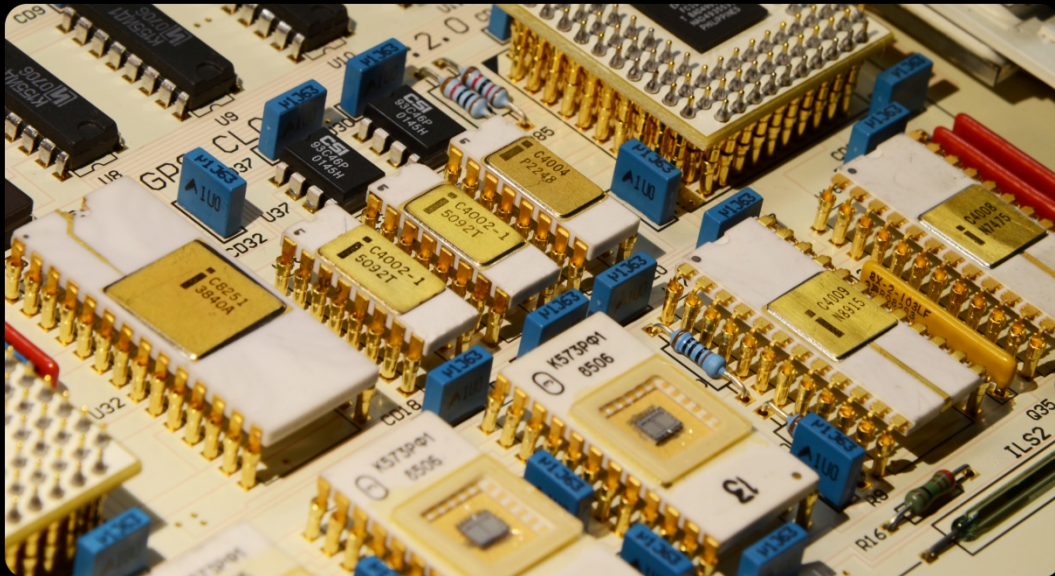
The improbable functional assembly of Russian and American parts makes the heart beat of « The 4004 Reborn » masterpiece.



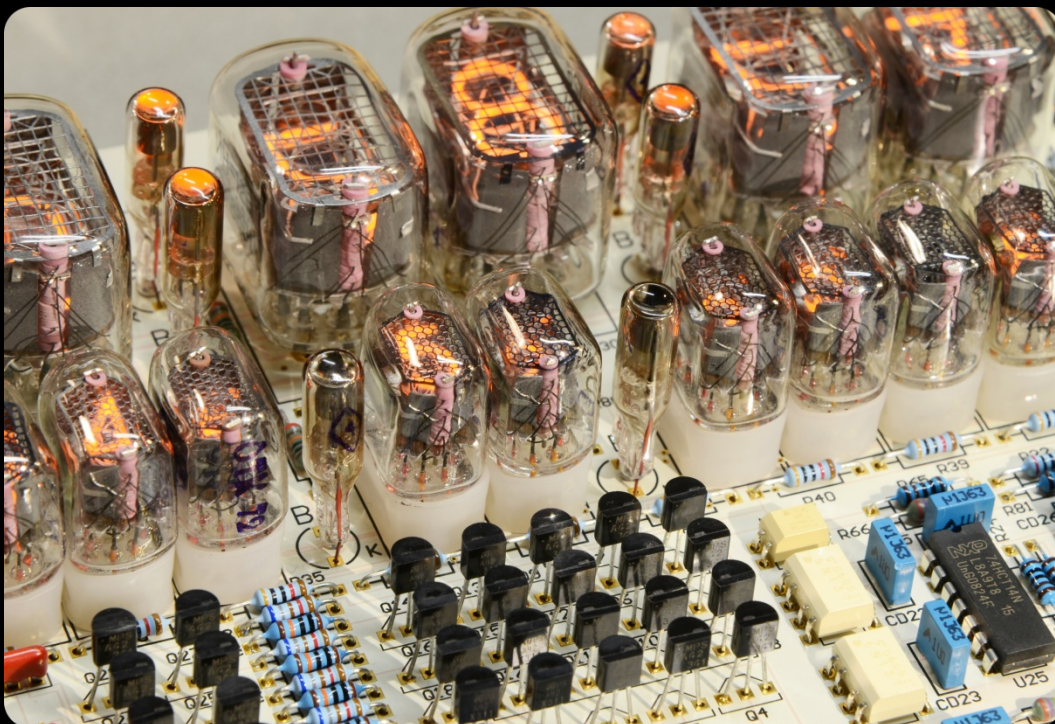
The Russian made neon displays were designed during the years 1960. They are formed by a stack of 10 cathodes, representing the digits 0 to 9.

When a voltage is applied between the front grid and one of the 10 cathodes, neon gas in the display ionizes instantly as a halo around the cathode : the digit appears.

Neon bulbs are also Russian made and are fitted with a front lens to evenly distribute the light.



The heart of the artwork is designed with the earliest American Intel™ Corporation components from the 70's, today collector, as the first bricks of modern electronics.

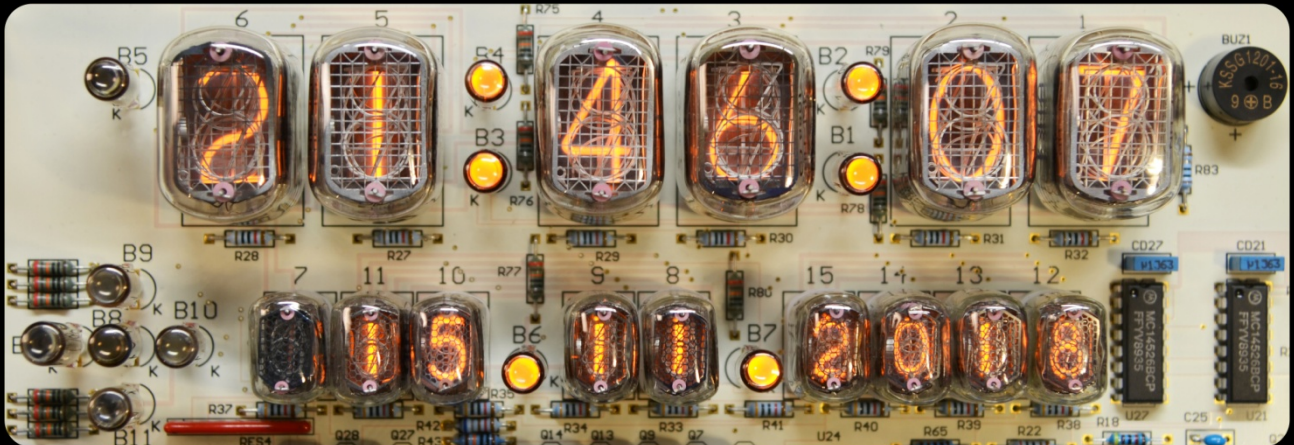


FREDERIC IMBERT

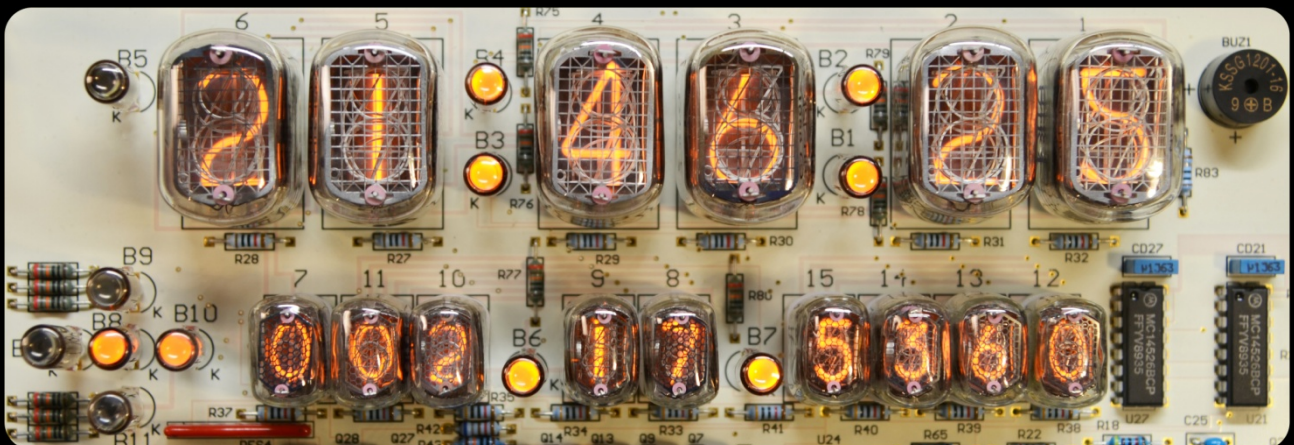
THE 4004 REBORN – WHITE CERAMIC 4004 INVENTION PIECE 02

THE DISPLAYS

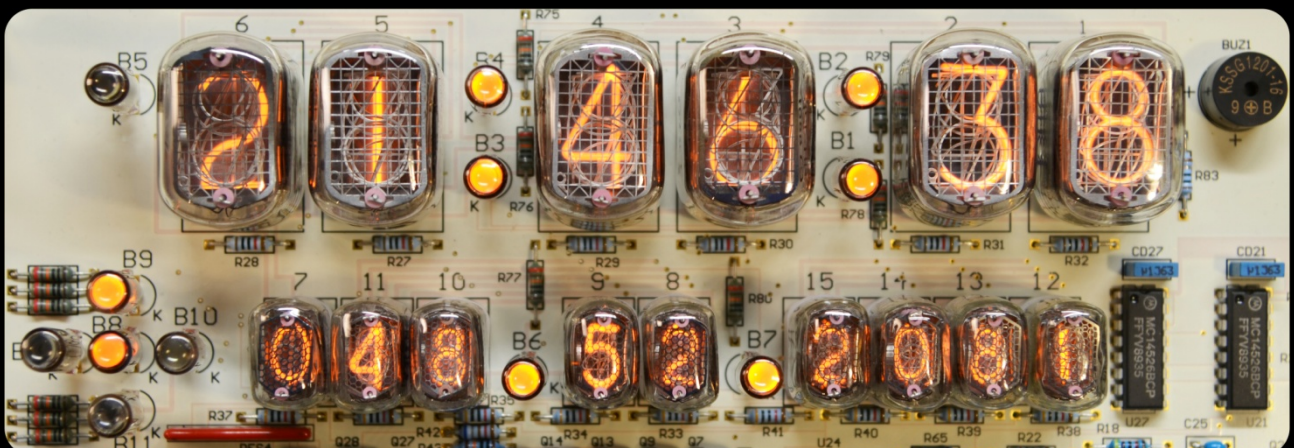
Local time, current date and geographic coordinates (longitude, latitude and elevation) of the artwork are displayed successively from embedded GPS receiver, with absolute accuracy.



Local time + current date



Local time + current longitude 002°17'53.60" East



Local time + current latitude 48°52'20.81" North

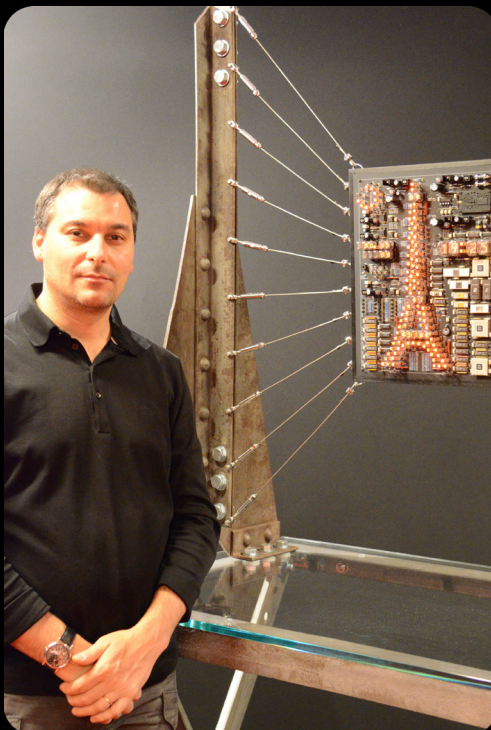
FREDERIC IMBERT

THE 4004 REBORN – WHITE CERAMIC 4004 INVENTION PIECE 02

ARTWORK DESCRIPTION

- 4 numeroted masterpieces – Reference IP02
- Genuine Intel™ white ceramic 4004 inside
- Certificate of authenticity for the white ceramic Intel™ 4004 in the artwork, with high definition pictures, detailed timing diagrams and waveforms.
- Local time display on the 1st line
- Seconds 00 to 19 : current date display on the 2nd line
- Seconds 20 to 29 : longitude display
- Seconds 30 to 39 : latitude display
- Seconds 40 to 49 : elevation display
- Seconds 50 to 59 : number of GPS satellites detected and acquired
- Automatic settings of time, date and geographic coordinates by embedded GPS receiver
- Neon displays and neon bulbs from Sputnik era Russian technology
- Core electronic components from 1970 Intel™ and post-2000 Altera technologies
- Size : 610 mm (Large) * 550 mm (Height) * 50 mm (Deep)
- Weight : 33.1 lbs /15.0 kg

THE ARTIST



Passionate about vintage electronics and complex horology, Frédéric invents and develops a new aesthetic concept in Techno'Pop contemporary art, combining Art and Sciences, vintage and modernity, technologies of today and yesterday.

Since the very first drawing in 2002, Frédéric has been designing surprising and improbable Time Masterpieces with no compromise, as he had always dreamed them for himself.

During all these years, he was in constant quest for the rarest, the most collectable and museum grade, vintage retro style and working components, to obtain the most desirable materials for his creations.

The revival of these parts full of history through different collections of time masterpiece artworks, from the simplest to the most outstanding including beams and rivets from the Eiffel Tower, allows to share the absolute beauty of these forgotten components.

FREDERIC IMBERT
121, Av. des Champs Elysées
75008 | Paris

(+33) 6.11.88.49.09
f.imbert@luxury-artworks.eu

www.luxury-artworks.eu